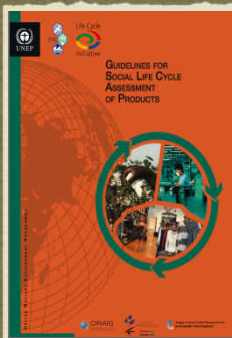


Development of the Social Hotspots Database

UNEP Database workshop, Tokyo-Japan
February 9th 2010

Catherine Benoit
Sylvatica, University of New Hampshire

History of the project




- Idea generated by Greg Norris and Catherine Benoit during the development of the UNEP Guidelines more than 2 years ago
- Aims to play a similar role than existing E-LCA database such as ecoinvent/ although not used in footprint calculation
- Project presented at several LCA conferences in the last two years and to the University of Arkansas in March 2008
- Work on the database started in September 2009 with a small team working from University of New Hampshire

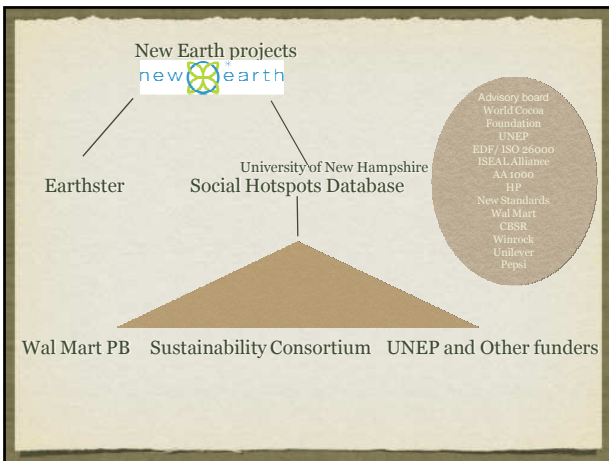
Vision

- Identify product supply chains social impacts
- Communicate about social impacts in supply chains to a broad audience
- Improve social conditions
- Track improvement

SHDB - Backbone of SLCA



- The goal is to provide visibility in the supply chain
- Where are the people in my supply chain?
- What are the specific risks and opportunities?
- Model the product life cycle by country/sector
- Express the share of supply chains where there is specific hotspots
- Link to site specific assessment



Timeline

Work started	Initial model First 4 tables	Expanded model 9 tables	Expanded model 13 tables	Available in the web
Sept. 2009	Feb. 2010	June 2010 (TSC)	Sept. 2010 (TSC)	Fall 2010

First tables developed:

- Worker hours and Wage rates
- Child Labour and children out of school
- Forced Labour,
- Living wage include Minimum wage, non-poverty wage and population living with less than 2\$ a day
- Access to community services (hospital beds and Access to improved to sanitation services)

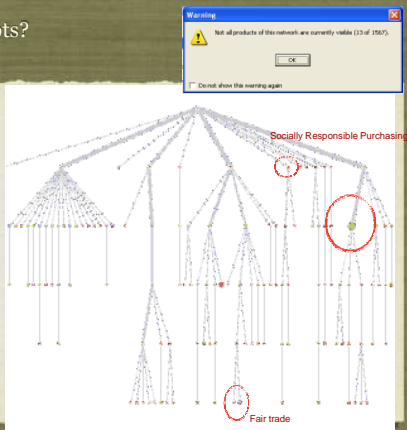
Upcoming

- 5- Freedom of association
- 6- Collective bargaining
- 7- Availability/ quality of education services
- 8- Presence of labour laws
- 9- Presence of legal system (support to victim)
- 10- High conflict zone
- 11- Indigenous rights
- 12- Gender equity
- 13- Hours of work

What are hotspots?

They are unit processes in the product life cycle providing higher opportunity to address issues of concern –risks

- Risks of violations
- Risks of reputations
- Issues that need to be considered when doing business in a certain sector in a certain region/country



Four dimension of social Hot spots

- ◆ Severity/gravity of the issue/theme
- ◆ Share of relevant activity variable within the life cycle
- ◆ Level of assessed risk (low, medium, high, etc.)
- ◆ Confidence in data

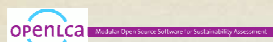
The Social hotspots database project

- Developing a database from best publicly available international secondary sources of data on a set of themes related to human and worker rights, investment in people and community, and positive business practices.
- Developing hotspots characterization factors in order to qualify the severity of the occurrence of a situation of concern or opportunity (example: low/medium/high access to health services for country/region)
- Linking country/sector specific hotspots assessment to an Input-Output trade model to visualize product life cycle social hotspots.
- GTAP Provide Global Trade data for 113 countries/regions and 57 sectors
- Enabling incremental enrichment of the publicly available database with best available data contributed by interested parties.
- Validating the data.

Overall system



Earthster - Open LCA



- The database will be available for use through Earthster and LCA softwares such as Open LCA



- The tables will be available through Analytica viewer via web
- In order to enable queries
- Present transparently the database

Conclusion

- The model is getting built and a first version will be available this winter
- The SHDB is being used by Wal Mart in three pilots project
- Building great knowledge of publicly available international database
- Possibility to link with other database in the future eg. audit results
- Interested parties will be able to submit better data in the second phase
- Will greatly facilitate to conduct Social LCA study
- The SHDB roundtable welcome new funding partners

. Thank you

. Social Hotspots Database Project

- . A project web site is getting built
- . Look on www.newearth.info for link

