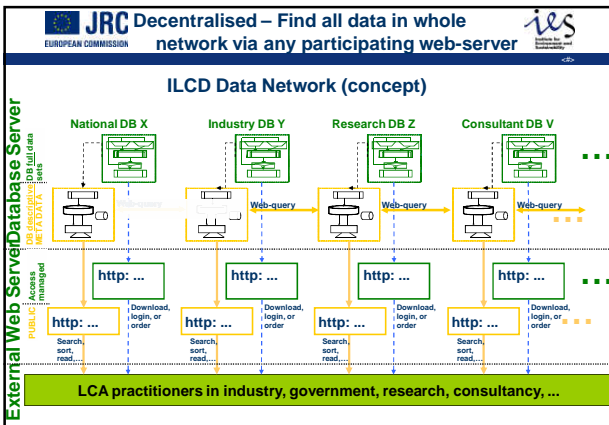
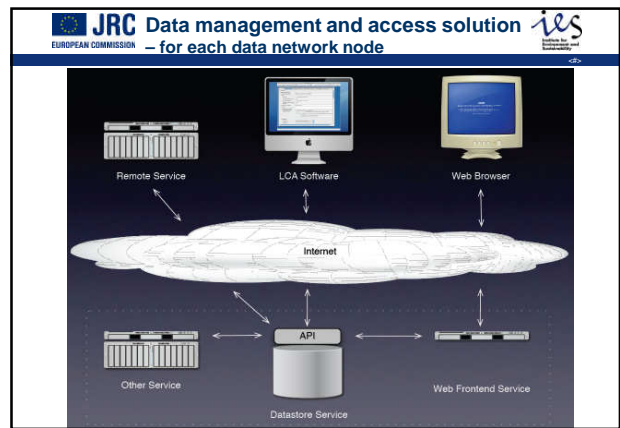
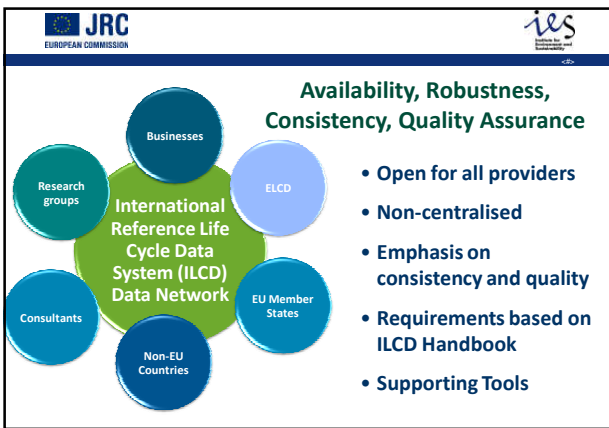


JRC **ies**

CATEGORY	No. of data sets	CATEGORY	No. of dataset
End-of-life treatment	45	Materials production	62
Energy recycling	28	Plastics	24
Waste water treatment	5	Metals and semimetals	11
Landfilling	12	Wood	4
Energy carriers and technologies	173	Organic and Inorganic	12
Electricity	66	Other mineralic materials	5
Heat and steam	87	Water	6
Mechanical energy	12	Transport services	22
Crude oil based fuels	5	Water	6
Natural gas based fuels	1	Air	2
Lignite and Hard coal based fuels	1	Other transport	4
Systems	14	Rail	4
Construction	13	Road	6
Packaging	1		



JRC **ies**

Entry Level Requirements for ILCD Data Network

•Method	<ul style="list-style-type: none"> • ISO 14040 and -44 compliant • ILCD Methodological compliance not enforced • Methods used documented
•Data quality	<ul style="list-style-type: none"> • Specify technological, geographical and time-related representativeness • Data quality stated using ISO quality criteria only
•Review	<ul style="list-style-type: none"> • Use of reviewers from registry not required • Qualified independent internal/external reviewer in line with ISO 14044 • Qualified reviewer is adapted from ISO 14025 • Unit process level not required, depending on data quality claims • Separate review report not required (for external reviewer) but review documented
•Nomenclature	<ul style="list-style-type: none"> • ILCD nomenclature (e.g. ILCD reference elementary flows) • Certain aggregated elementary flows (e.g. VOC) permitted • Terminology not enforced
•Documentation	<ul style="list-style-type: none"> • Both mandatory and recommended fields • ILCD format (for IT compatibility / functionality of Data Network)

JRC EUROPEAN COMMISSION **ies**

Availability, Robustness, Consistency, Quality Assurance

International Reference Life Cycle Data Network (ILCD) Data Network

- Open for all providers
- Non-centralised
- Emphasis on consistency and quality
- Requirements based on ILCD Handbook
- Supporting Tools

JRC EUROPEAN COMMISSION **ies**

ILCD data set editor (under internal testing)

JRC EUROPEAN COMMISSION **ies**

Web-publication of data -I-

Example of overview display of data set

Data set overview on: Heat

Type of process	Parameterised?	Dataset	Compliance system	Dataset use approval	Available languages
LCI result	No	Format: ILCD 1.0	ILCD Data Network compliance - Entry level phase 1	No official approval by producer or operator	English

EU-27 2006 Heat, residential heating systems from natural gas, condensing boiler, max. heat output 14,9 kW; consumption mix, at consumer, at a temperature level of 55°C

Category: Energy carriers and technologies / Heat and steam

Synonyms:

Completeness of product model: All relevant flows quantified

Use advice for dataset: The data set represents the life cycle of the heating system and the cradle to gate inventory of the energy supply. It can be used to characterise the whole supply chain for heat used for residential heating. The data set comprises the inventory up to the outlet of the heating system. It includes the system components necessary to distribute the heat in the house and eventually to combine it with other heating sources. Combination with individual unit processes using this commodity enables the generation of user-specific (product) LCAs.

General comment: A detailed model of a wall-mounted natural gas condensing boiler was used. The data set covers all relevant process steps / technologies over the supply chain of the represented cradle to gate inventory with a good overall data quality.

JRC EUROPEAN COMMISSION **ies**

Example of the display of a full data set

JRC EUROPEAN COMMISSION **ies**

National LCA Data and tools for the ILCD Data Network upcoming

European Reference Life Cycle Database (eRLCD)
Contributions of the ISO and EU institutions to address EU needs

In preparation: LIA, marcogaz

JRC EUROPEAN COMMISSION **ies**

Policy and business applications supporting sustainable consumption and production

Life Cycle Assessment data and studies

Invited consultations



Expert meetings

Public consultation & 4-days workshop

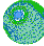
Expert meeting

Invited consultations

LAUNCH March 2010

BUT: Europe is not alone – avoid isolated solution
→ **Work closely together internationally**
→ **Build on existing achievements**



- 27 EU member states
- UNEP
- WBCSD
- 6 National database projects

Business: 16 EU-level associations
LCA tools and databases: 16 globally leading developers
LCA methods: 8 globally leading developers

Involvement in development or consultation does not imply an agreement or endorsement of the deliverables.

Summary

Benefits of ELCD DB and of ILCD Handbook and Data Network

- Build on international consultation, method worldwide
- Consistency and quality assurance
- Coherence across business and policy instruments
- “Level playing field” across competing products
- Reduced costs

Work closely together internationally

Thank you for your time and attention

Further information
email: LCA@jrc.ec.europa.eu

European Platform, ELCD, ILCD
<http://lct.jrc.ec.europa.eu>