

International Open Workshop  
 "Worldwide efforts on LCA Databases"  
 Monday, 8 February 2010

Database developments in the Asia-Pacific region:  
 Progress made in Australia

Tim Grant  
 Life Cycle Strategies, Australia



Outline of Presentation

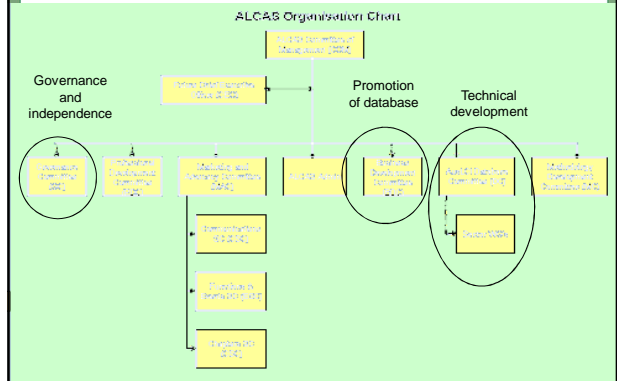
- AusLCI development – National Project
- Other developments in databases
- Future prospects



- AUSLCI is now a project of Australian Life Cycle Assessment Society.
- Supported by Building Industry LCI project.



AusLCI is ALCAS's major focus.

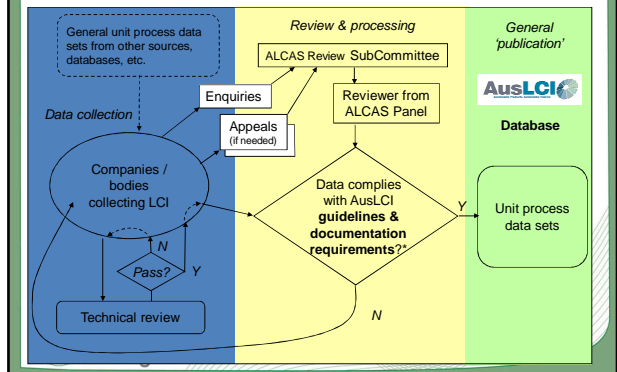


Data development process

- AusLCI is not a data developer. Data is developed by industry and LCA practitioners and submitted to AusLCI for publication.
- AusLCI sets the guidelines, reviews data for publication, publishes and manages the data.
- AusLCI will support industries collecting data



Data development process



## Document development

- Guidelines & requirements – completed final draft
- Technical review guidelines (for companies) – 2<sup>nd</sup> draft
- Requirements review procedure (for ALCAS AusLCI reviewers) - 2<sup>nd</sup> draft
- Documents still required
  - Documentation guideline
  - Database design specification
  - User templates
  - Database user guide



## Current activity

- Finalising working documents
- Trialling dataset review processes and documentation with 2 to 3 companies
- All development and documents available at <http://www.auslci.alcas.asn.au/>



## Business development in AusLCI

- Government funding still being sought
- Financial arrangements for data collection and distribution are not yet developed. They may depend on other financial sources.



## Other database activities



## RMIT/LCS Australian LCA database

- Database developed in 1997-98 and since maintained by RMIT University and Life Cycle Strategies.
- Limited industry input, 600 processes, hundreds of users in Australia and New Zealand, no official review process.
- Available at <http://data.lifecycles.com.au>



## Building Product Innovation Council (BPIC) LCI project

- A consistent 'level playing field' methodology for use with building materials and products life cycle assessments (LCA).
- An extensive database of LCI data for building materials and products, all compiled in accordance with the methodology.
- A database of replacement lives for materials, products and elements of construction used in Australian buildings.
- A consistent set of 'weightings' for the relative importance of different environmental impacts adapted to the priorities of local stakeholders in different locations and climates.
- It is aimed to include inputs in AusLCI at some point.



## Agriculture database

- Rural Industries Research and Development Organisation (RIRDC) developed LCA methodology for Australian rural industries.
- It may look to develop a database of rural industry products.



## Other activities

- CAD interactive LCA program with its own LCA database
- Ecoinvent. Available Australian data will be published within ecoinvent database.
- Input output database, managed and sold by University of Sydney. 1994-5 is currently in use. 2004-5 will soon be available.



## Future prospects

- Activity is slow due to lack of funding and speed at which consensus works.
- Alternative databases currently fill the gaps (and for next few years).
- Major industry players keep AusLCI at a distance - not yet willing to submit for publication.
- The demand for LCA is increasing pressure on producers to participate.
- Need for a greater global view of the context of data.

