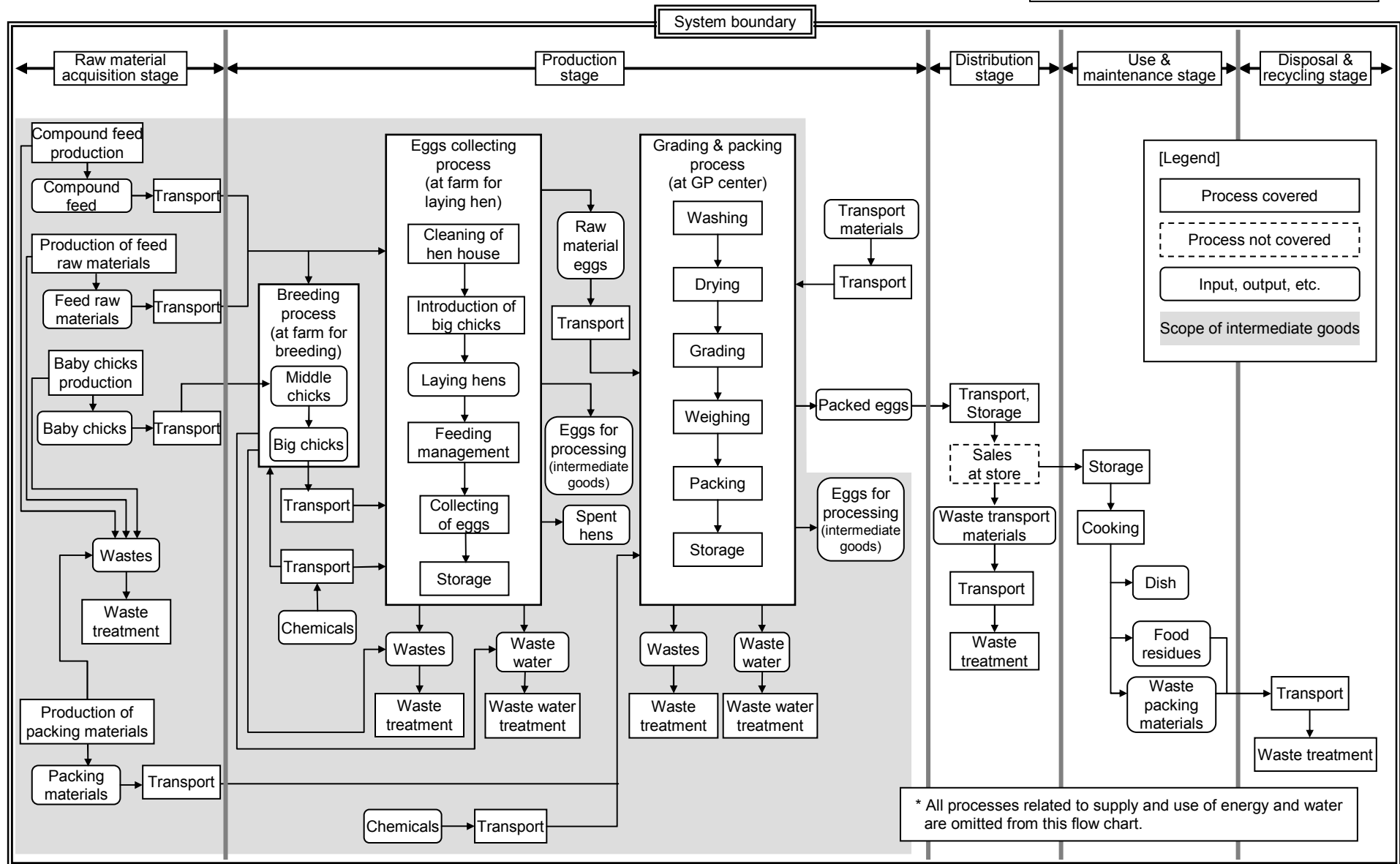


Annex A (normative): Life cycle flow chart

(Provisional translation) PA-CN-01,
Egg (Sep. 26, 2011)



* This flow chart shows a representative life cycle of "chicken eggs" among market poultry eggs.
 * Conforming to the revision of the basic rules on July 2010, the sales process in the distribution stage shall be excluded from the assessment until its proper calculation method is finally established.
 * As for items to be recycled, up to and including recycling preparation processes shall be calculated.