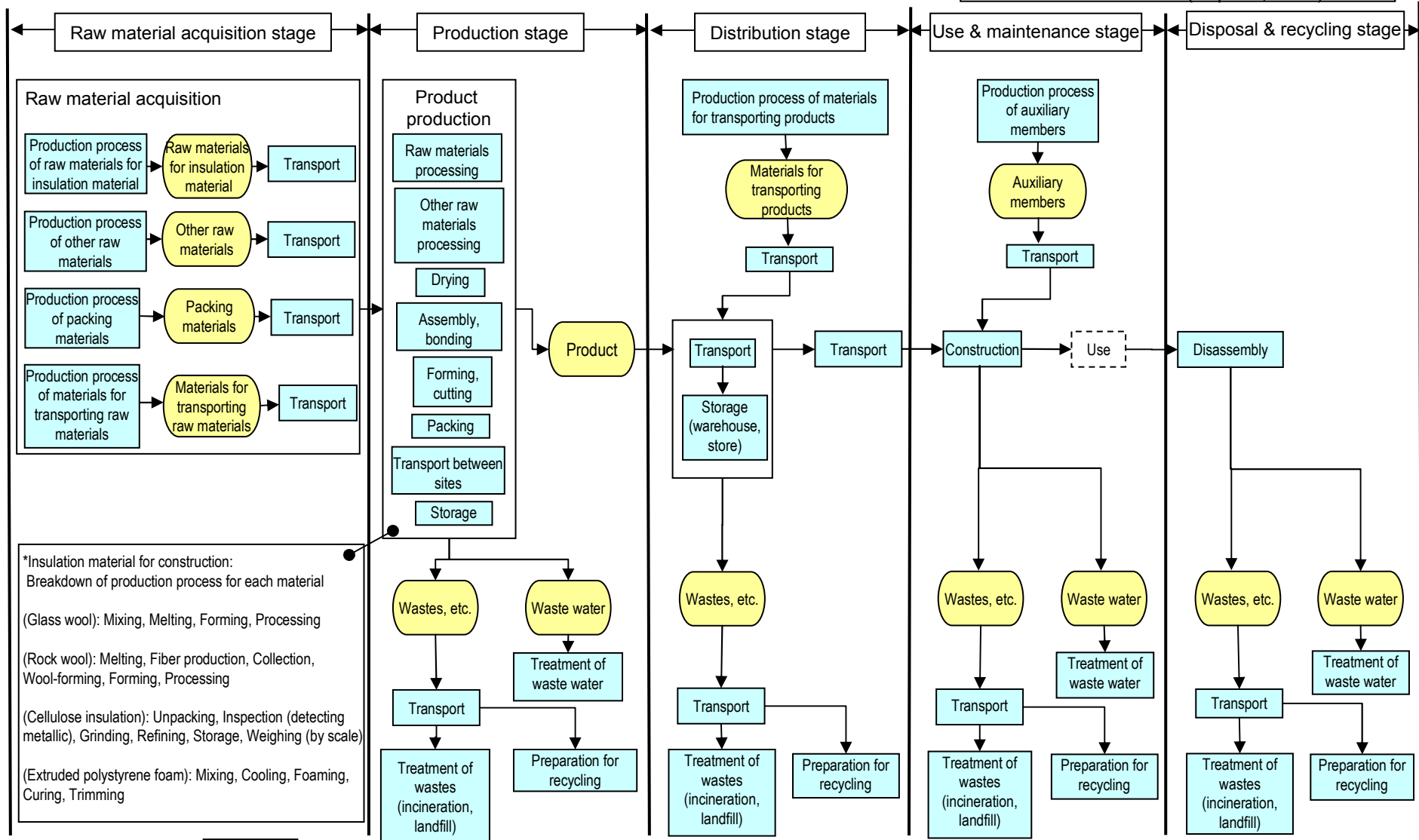


Annex B.1 (normative): Life cycle flow chart (final products)

(Provisional translation) PA-CK-01, Insulation Material for Construction (Sep. 20, 2011)



*Insulation material for construction:
Breakdown of production process for each material

(Glass wool): Mixing, Melting, Forming, Processing

(Rock wool): Melting, Fiber production, Collection, Wool-forming, Forming, Processing

(Cellulose insulation): Unpacking, Inspection (detecting metallic), Grinding, Refining, Storage, Weighing (by scale)

(Extruded polystyrene foam): Mixing, Cooling, Foaming, Curing, Trimming

* Processes related to production and supply of "fuels," "electricity," "tap water" and "industrial water" are omitted from this flow chart since they are common to all life cycle stages.

* Production process may be changed according to each product.

* Conforming to the revision of the basic rules in July 2010, the "sales process" is provisionally excluded from the assessment until its proper calculation method is finally established.

Annex B.2 (normative): Life cycle flow chart (intermediate goods)

